

YOUTH STATION

WHY TAKE IT UPON YOURSELF

**BY NAVAL BASE
SECONDARY SCHOOL**

*Hold my hand and ride the wave
Why take it upon yourself
To do what is right or wrong
Let the book of life show the way*

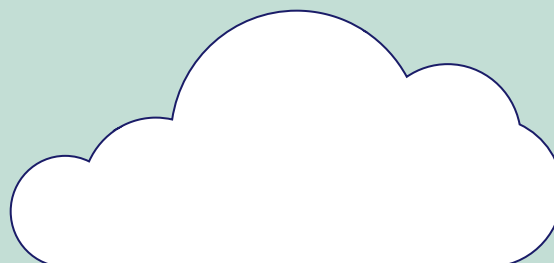
*My friend you are not alone
Why take it upon yourself
In the time of loneliness and the call of solitude*

*But the darkness has stood by me
In times of loneliness when all in all is here*

*Take my breath away and blow a kiss of hope
Why take it upon yourself
To do what is ask of you
Is harder than the way of life*

*But the dark has a hold on me
I'm falling in the deep, oh won't you set me free*

*I have come this far I'm here to take you home
To a place you've once belonged
You don't have to pack your bags
Don't take it all upon yourself*



*But the dark has a hold on me
I'm falling in the deep, oh won't you set me free*

*I have come this far I'm here to take you home
To a place you've once belonged
You don't have to pack your bags
Don't take it all upon yourself*

WRITTEN BY:

Allysandra Eunice Ilagan

MUSIC ARRANGED & PERFORMED BY:

Allysandra Eunice Ilagan
(Vocals, Guitar)

